

ELECTRICAL: FIRST CIRCUIT: 120/1/60, 15 AMP
SECOND CIRCUIT: 120/1/60, 10 AMP

SHIP WEIGHT: 1,200 LBS.

MEDIA PLAYER: STRATACACHE

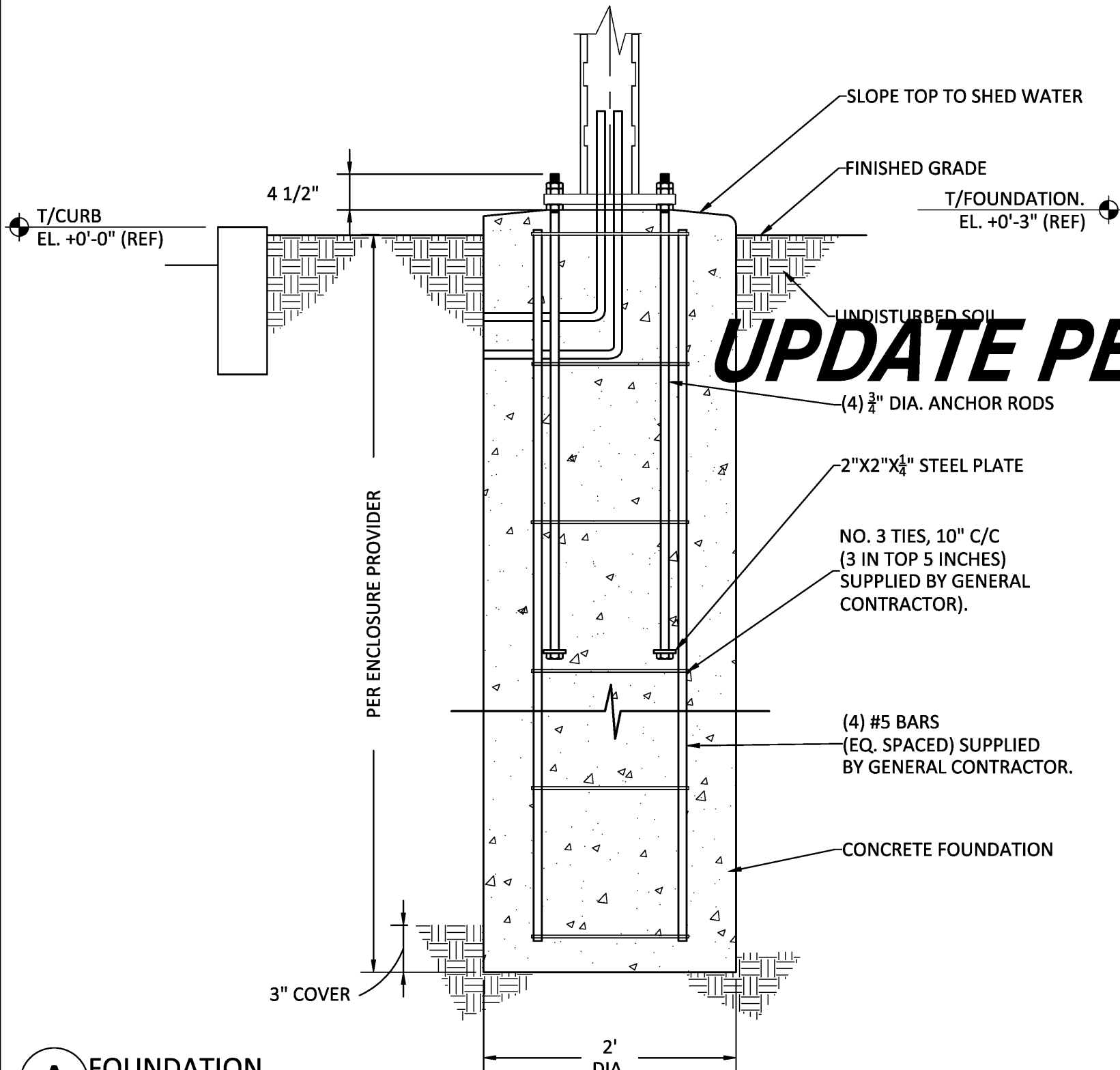
VERIFY

GENERAL NOTES
-THE FOLLOWING CODES WERE USED IN DESIGN:
-IBC 2012
-ASCE 7-10
-ACI 318-11
-AISC 360-10 & AISC 341-10
-AWS D1.1
-WIND SPEED 105 MPH (ULTIMATE WIND SPEED)
-EXPOSURE C
-DESIGN LOADS DERIVED FROM THESE CODES AND FORCES
-AXIAL- XXX LBS
-SHEAR- XXXX LBS
-MOMENT- XXXX LB-FT
-ALL FOOTING EXCAVATIONS ARE TO BE CLEAR OF WATER AND FOREIGN MATTER BEFORE PLACING CONCRETE
-MINIMUM ALLOWABLE LATERAL SOIL BEARING PRESSURE OF 100 PSF/FT (X2)
-SITE SOIL CONDITIONS TO BE CONFIRMED BY GEOTECHNICAL ENGINEER, IF ASSUMED SOIL CONDITIONS ARE NOT PRESENT, FOUNDATION SHALL BE DESIGNED BY A LICENSED STRUCTURAL ENGINEER TAKING IN TO ACCOUNT ACTUAL SITE SOIL CONDITIONS
-TOP 6" OF SOIL NEGLECTED IN EMBEDMENT DEPTH CALCULATIONS (EMBEDMENT DEPTHS SHOWN ARE FROM GRADE)
-ELECTRICAL CONTRACTOR TO PROVIDE INFORMATION ON CONDUIT AND ELECTRICAL REQUIREMENTS

CONCRETE:
-ALL FOOTINGS SHALL BEAR ON FIRM UNDISTURBED RESIDUAL SOIL AND/OR ENGINEERED EARTH FILL COMPACTED TO 98% OF ITS MAXIMUM DRY DENSITY AS PER ASTM D 698-70 (STANDARD PROCTOR) UNLESS NOTED OTHERWISE
-ALL PIERS TO EXTEND TO FROST DEPTH AS DETERMINED BY LOCAL JURISDICTION
-TOP OF PIERS SHALL BE SLOPED SUCH THAT MOISTURE CANNOT ACCUMULATE
-MINIMUM CONCRETE STRENGTH (F' C=3,000 PSI) SHALL CONFORM WITH MCDONALD'S CAST-IN-PLACE CONCRETE SPECIFICATIONS SECTION 2.13-A
-USE OF ADMIXTURES SHALL CONFORM TO MCDONALD'S CAST-IN-PLACE CONCRETE SPECIFICATION SECTION 2.6
-AIR ENTERTAINMENT SHALL CONFORM WITH MCDONALD'S CAST-IN-PLACE CONCRETE SPECIFICATIONS 2.6-A AND 2.13-A
-WATER CONTENT RATIO SHALL CONFORM TO MCDONALD'S CAST-IN-PLACE CONCRETE SPECIFICATIONS SECTION 2.13-A
-FOUNDATION CONCRETE TO BE TESTED PER MCDONALD'S CAST-IN-PLACE CONCRETE SPECIFICATIONS SECTION 3.14
-PROVIDE A MINIMUM 3" OF CONCRETE COVER OVER ALL EMBEDDED STEEL
-REINFORCEMENT PLACEMENT SHALL CONFORM TO MCDONALD'S CAST-IN-PLACE CONCRETE SPECIFICATIONS SECTIONS 3.2 & 3.5 PERFORMED BY GENERAL CONTRACTOR
-ANCHOR RODS TO BE SET IN ACCORDANCE WITH AISC CODE OF STANDARD PRACTICE
-DO NOT PLACE POLES ON CONCRETE UNTIL CONCRETE HAS CURED PER MCDONALD'S CAST-IN-PLACE CONCRETE SPECIFICATION SECTION 3.11-E

STEEL:
-STEEL PIPE SECTION: ASTM A53 OR A252 TYPE E GRADE B (Fy=35 KSI)
-HSS ROUND SECTION: ASTM A500 GRADE B (Fy=42 KSI)
-HSS SQUARE/RECTANGULAR SECTIONS: ASTM A500 GRADE B (Fy=46 KSI)
-HEADED ANCHOR RODS ASTM F1554 GR 55, AN ACCEPTABLE ALTERNATIVE IS ASTM F1554 GR 55, S1 WHEN THE EMBEDDED END OF THE ROD IS THREADED AND THE NUT TACK WELDED PRIOR TO GALVANIZATION.
-STEEL ANGLES, CHANNELS, STRUCTURAL SHAPES AND PLATES: ASTM A36
-REINFORCEMENT: ASTM A615 GRADE 60- BY GENERAL CONTRACTOR
-NUTS: ASTM A563A, HEAVY HEX
-WASHERS: ASTM F844 A36
-USE ASTM A153 CLASS C OT DIPPED GALVANIZED BOLTS AND FASTENERS.
-ANCHOR RODS, NUTS, AND WASHERS SHALL BE SHIPPED AS AN ASSEMBLY FROM THE SIGN/LIGHTING MANUFACTURER
-NO FIELD HEATING TO BEND STEEL SHALL BE ALLOWED WITHOUT ENGINEER'S APPROVAL
-DO NOT CUT ANCHOR RODS AFTER INSTALLATION OF POLE
-AFTER INSTALLATION, ALL EXPOSED STEEL SHALL BE PAINTED WITH AN ENAMEL PAINT TO INHIBIT CORROSION
-ANY FIELD WELDING SHALL FIRST BE VERIFIED BY ENGINEER AND PERFORMED IN ACCORDANCE WITH AWS D1.1
-REFER TO SIGN MANUFACTURER DRAWINGS AND INSTRUCTIONS FOR ADDITIONAL INFORMATION

- NOTES:
- PIER DEPTHS REQUIRED ARE MINIMUMS. ALL PIERS TO EXTEND TO FROST DEPTH AS DETERMINED BY LOCAL JURISDICTION.
 - TOP OF PIERS SHALL BE SLOPED SUCH THAT MOISTURE CANNOT ACCUMULATE.
 - MINIMUM ALLOWABLE LATERAL SOIL BEARING PRESSURE 100 PSF/FT OF DEPTH (X2)
 - ALL REINFORCING STEEL BY GENERAL CONTRACTOR.

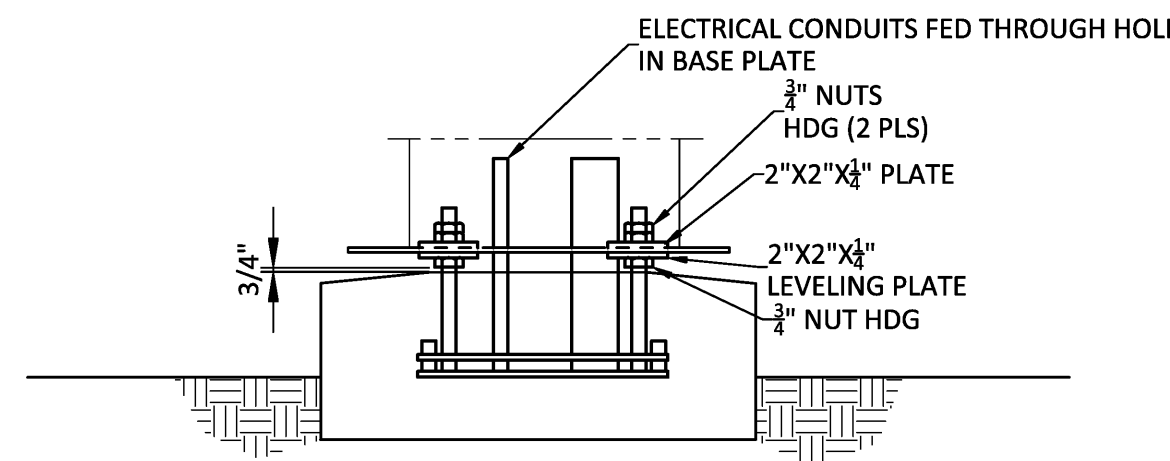
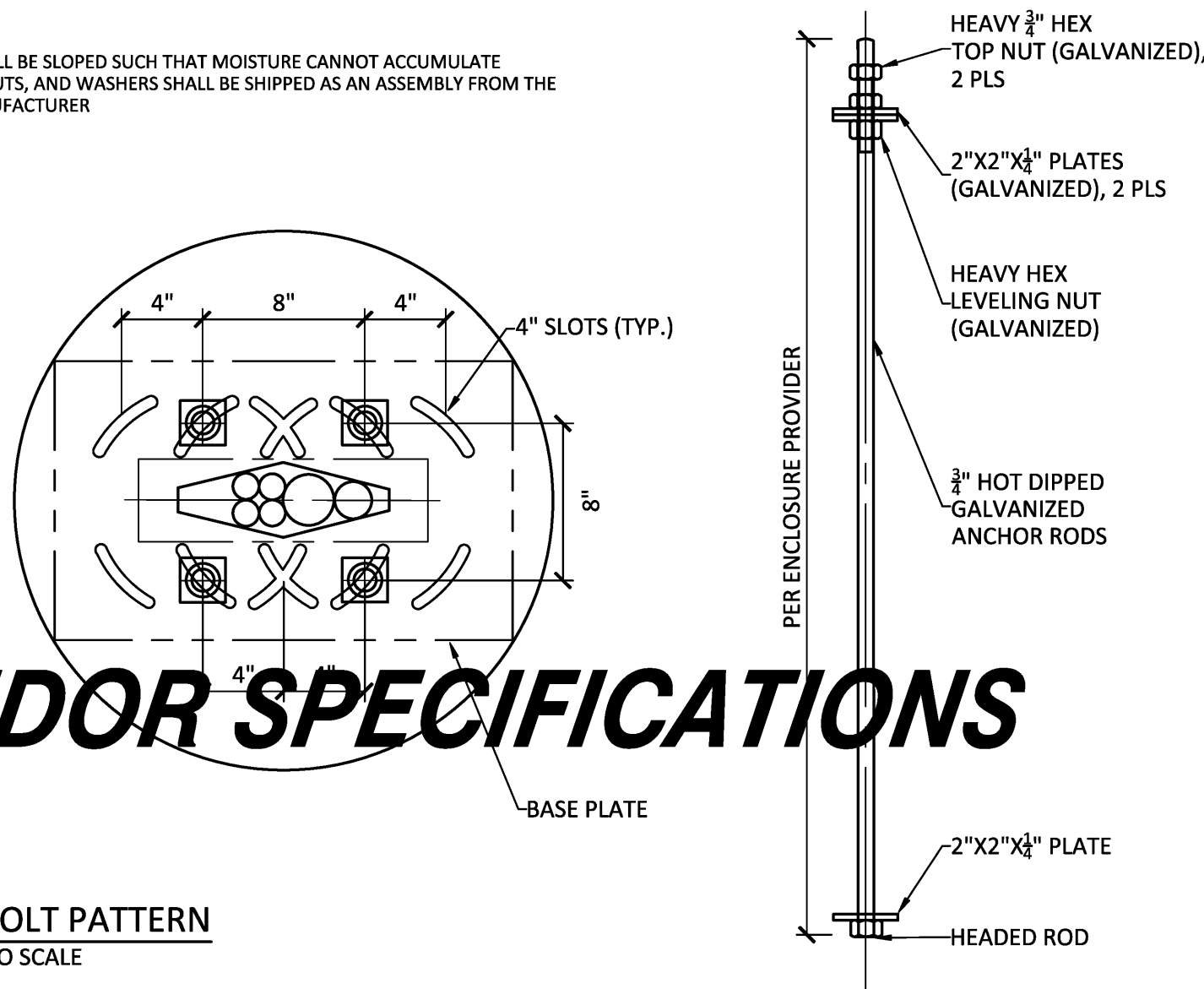


A FOUNDATION
NOT TO SCALE

UPDATE PER VENDOR SPECIFICATIONS

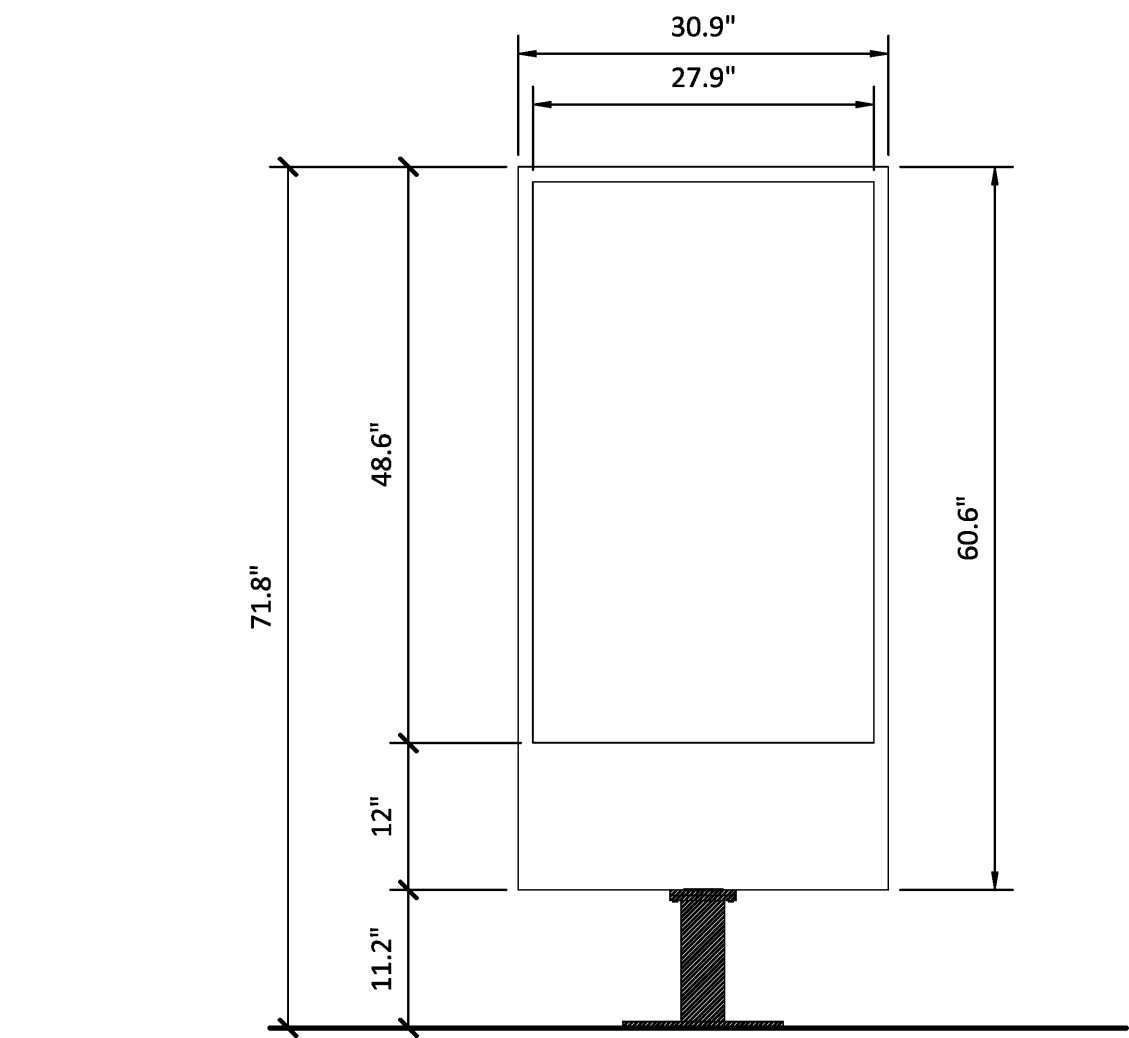
B ANCHOR BOLT PATTERN
NOT TO SCALE

- NOTES:
- TOP OF PIERS SHALL BE SLOPED SUCH THAT MOISTURE CANNOT ACCUMULATE
 - ANCHOR RODS, NUTS, AND WASHERS SHALL BE SHIPPED AS AN ASSEMBLY FROM THE ENCLOSURE MANUFACTURER
 - DO NOT CUT ANCHOR BOLTS AFTER INSTALLATION OF POLE



C CONNECTION DETAILS
NOT TO SCALE

DIGITAL MENU BOARD
NOT TO SCALE



ELECTRICAL: FIRST CIRCUIT: 120/1/60, 15 AMP
SECOND CIRCUIT: 120/1/60, 10 AMP

SHIP WEIGHT: 350 LBS.

MEDIA PLAYER: STRATACACHE

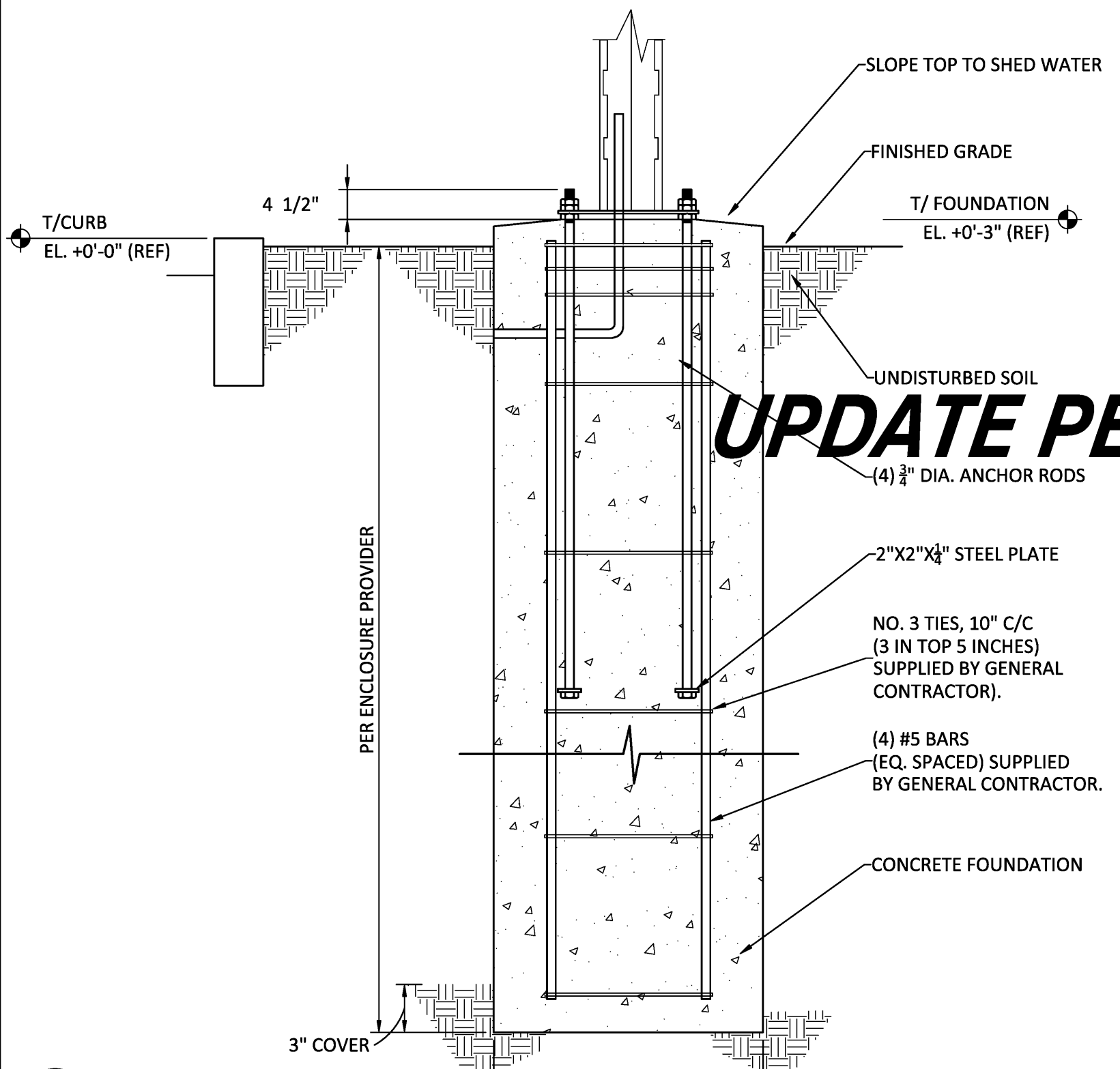
VERIFY

GENERAL NOTES
-THE FOLLOWING CODES WERE USED IN DESIGN:
-IBC 2012
-ASCE 7-10
-ACI 318-11
-AISC 360-10 & AISC 341-10
-AWS D1.1
-WIND SPEED 105 MPH (ULTIMATE WIND SPEED)
-EXPOSURE C
-DESIGN LOADS DERIVED FROM THESE CODES AND FORCES
-AXIAL- XXX LBS
-SHEAR- XXXX LBS
-MOMENT- XXXX LB-FT
-ALL FOOTING EXCAVATIONS ARE TO BE CLEAR OF WATER AND FOREIGN MATTER BEFORE PLACING CONCRETE
-MINIMUM ALLOWABLE LATERAL SOIL BEARING PRESSURE OF 100 PSF/FT (X2)
-SITE SOIL CONDITIONS TO BE CONFIRMED BY GEOTECHNICAL ENGINEER, IF ASSUMED SOIL CONDITIONS ARE NOT PRESENT, FOUNDATION SHALL BE DESIGNED BY A LICENSED STRUCTURAL ENGINEER TAKING IN TO ACCOUNT ACTUAL SITE SOIL CONDITIONS
-TOP 6" OF SOIL NEGLECTED IN EMBEDMENT DEPTH CALCULATIONS (EMBEDMENT DEPTHS SHOWN ARE FROM GRADE)
-ELECTRICAL CONTRACTOR TO PROVIDE INFORMATION ON CONDUIT AND ELECTRICAL REQUIREMENTS

CONCRETE:
-ALL FOOTINGS SHALL BEAR ON FIRM UNDISTURBED RESIDUAL SOIL AND/OR ENGINEERED EARTH FILL COMPACTED TO 98% OF ITS MAXIMUM DRY DENSITY AS PER ASTM D 698-70 (STANDARD PROCTOR) UNLESS NOTED OTHERWISE
-ALL PIERS TO EXTEND TO FROST DEPTH AS DETERMINED BY LOCAL JURISDICTION
-TOP OF PIERS SHALL BE SLOPED SUCH THAT MOISTURE CANNOT ACCUMULATE
-MINIMUM CONCRETE STRENGTH (F' C=3,000 PSI) SHALL CONFORM WITH MCDONALD'S CAST-IN-PLACE CONCRETE SPECIFICATIONS SECTION 2.13-A
-USE OF ADMIXTURES SHALL CONFORM TO MCDONALD'S CAST-IN-PLACE CONCRETE SPECIFICATION SECTION 2.6
-AIR ENTERTAINMENT SHALL CONFORM WITH MCDONALD'S CAST-IN-PLACE CONCRETE SPECIFICATIONS 2.6-A AND 2.13-A
-WATER CONTENT RATIO SHALL CONFORM TO MCDONALD'S CAST-IN-PLACE CONCRETE SPECIFICATIONS SECTION 2.13-A
-FOUNDATION CONCRETE TO BE TESTED PER MCDONALD'S CAST-IN-PLACE CONCRETE SPECIFICATIONS SECTION 3.14
-PROVIDE A MINIMUM 3" OF CONCRETE COVER OVER ALL EMBEDDED STEEL
-REINFORCEMENT PLACEMENT SHALL CONFORM TO MCDONALD'S CAST-IN-PLACE CONCRETE SPECIFICATIONS SECTIONS 3.2 & 3.5 PERFORMED BY GENERAL CONTRACTOR
-ANCHOR RODS TO BE SET IN ACCORDANCE WITH AISC CODE OF STANDARD PRACTICE
-DO NOT PLACE POLES ON CONCRETE UNTIL CONCRETE HAS CURED PER MCDONALD'S CAST-IN-PLACE CONCRETE SPECIFICATION SECTION 3.11-E

STEEL:
-STEEL PIPE SECTION: ASTM A53 OR A252 TYPE E GRADE B (Fy=35 KSI)
-HSS ROUND SECTION: ASTM A500 GRADE B (Fy=42 KSI)
-HSS SQUARE/RECTANGULAR SECTIONS: ASTM A500 GRADE B (Fy=46 KSI)
-HEADED ANCHOR RODS ASTM F1554 GR 55, AN ACCEPTABLE ALTERNATIVE IS ASTM F1554 GR 55, S1 WHEN THE EMBEDDED END OF THE ROD IS THREADED AND THE NUT TACK WELDED PRIOR TO GALVANIZATION.
-STEEL ANGLES, CHANNELS, STRUCTURAL SHAPES AND PLATES: ASTM A36
-REINFORCEMENT: ASTM A615 GRADE 60- BY GENERAL CONTRACTOR
-NUTS: ASTM A563A, HEAVY HEX
-WASHERS: ASTM F844 A36
-USE ASTM A153 CLASS C OT DIPPED GALVANIZED BOLTS AND FASTENERS.
-ANCHOR RODS, NUTS, AND WASHERS SHALL BE SHIPPED AS AN ASSEMBLY FROM THE SIGN/LIGHTING MANUFACTURER
-NO FIELD HEATING TO BEND STEEL SHALL BE ALLOWED WITHOUT ENGINEER'S APPROVAL
-DO NOT CUT ANCHOR RODS AFTER INSTALLATION OF POLE
-AFTER INSTALLATION, ALL EXPOSED STEEL SHALL BE PAINTED WITH AN ENAMEL PAINT TO INHIBIT CORROSION
-ANY FIELD WELDING SHALL FIRST BE VERIFIED BY ENGINEER AND PERFORMED IN ACCORDANCE WITH AWS D1.1
-REFER TO SIGN MANUFACTURER DRAWINGS AND INSTRUCTIONS FOR ADDITIONAL INFORMATION

- NOTES:
- PIER DEPTHS REQUIRED ARE MINIMUMS. ALL PIERS TO EXTEND TO FROST DEPTH AS DETERMINED BY LOCAL JURISDICTION.
 - TOP OF PIERS SHALL BE SLOPED SUCH THAT MOISTURE CANNOT ACCUMULATE.
 - MINIMUM ALLOWABLE LATERAL SOIL BEARING PRESSURE 100 PSF/FT OF DEPTH (X2)
 - ALL REINFORCING STEEL BY GENERAL CONTRACTOR.

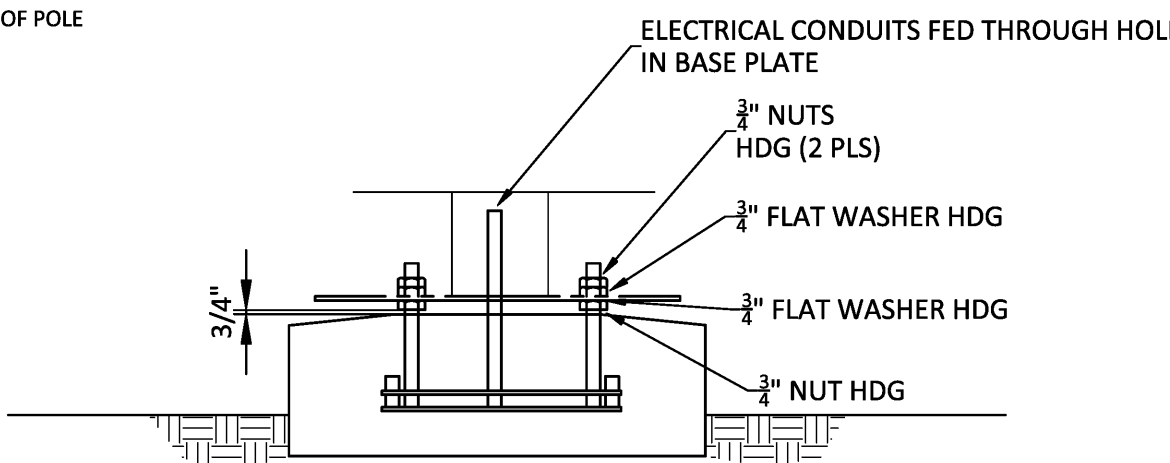
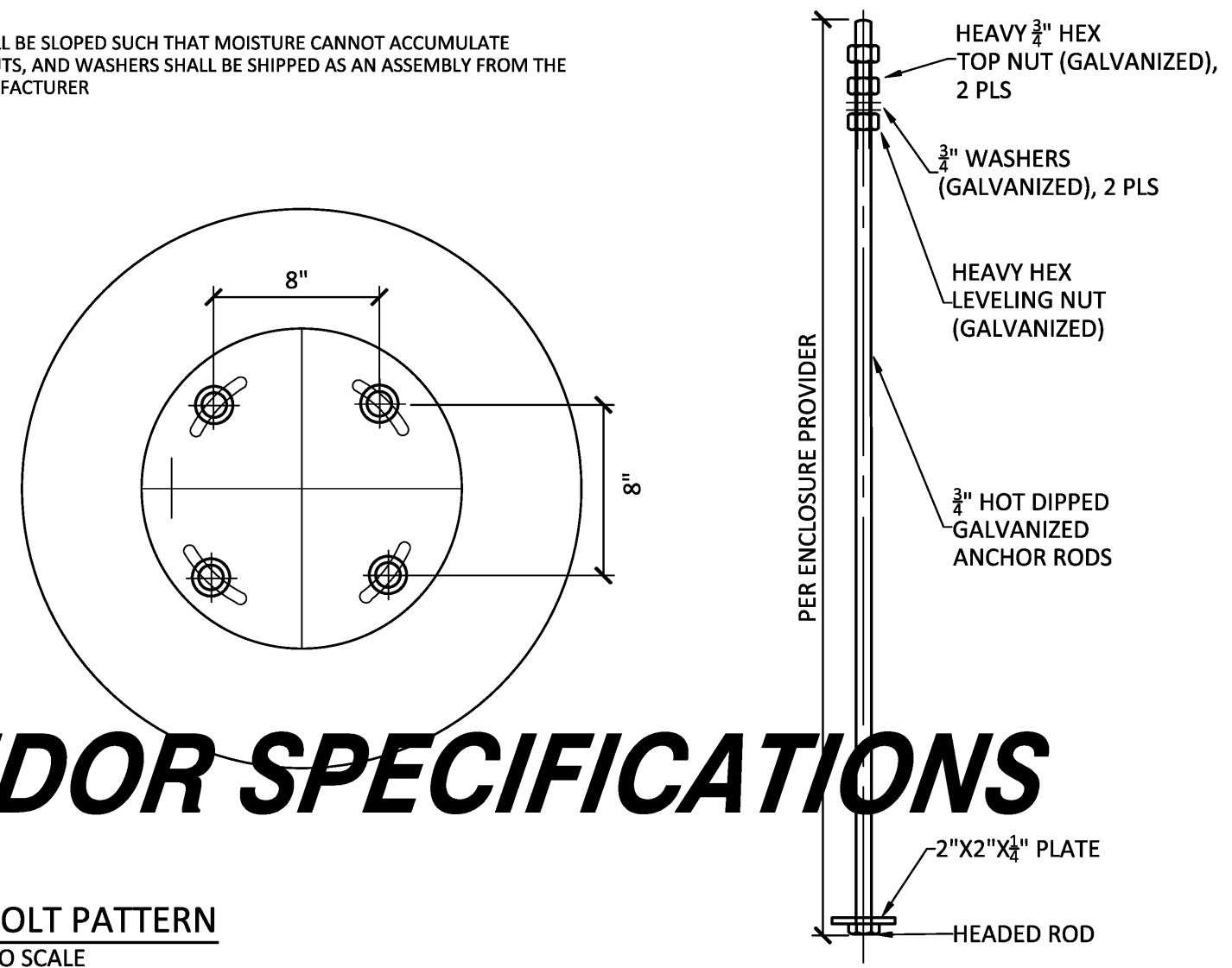


A FOUNDATION
NOT TO SCALE

UPDATE PER VENDOR SPECIFICATIONS

B ANCHOR BOLT PATTERN
NOT TO SCALE

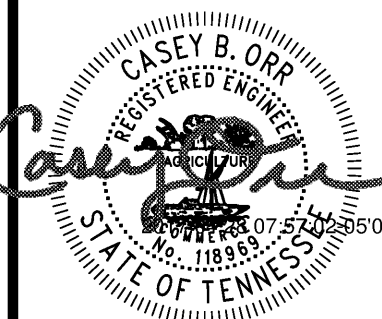
- NOTES:
- TOP OF PIERS SHALL BE SLOPED SUCH THAT MOISTURE CANNOT ACCUMULATE
 - ANCHOR RODS, NUTS, AND WASHERS SHALL BE SHIPPED AS AN ASSEMBLY FROM THE ENCLOSURE MANUFACTURER
 - DO NOT CUT ANCHOR BOLTS AFTER INSTALLATION OF POLE



C CONNECTION DETAILS
NOT TO SCALE

ELITE CONSTRUCTION GROUP
LAKE JACKSON, TX
PHONE: 979-285-0712
NOTE: THESE PRINTS HAVE BEEN REDUCED BY 50 PERCENT. SCALE WILL BE 50 PERCENT OF WHAT IS NOTED ON PLANS

DIGITAL PRE-BROWSE BOARD
NOT TO SCALE



crosspoint
engineering
9820 Old Bullard Road, Suite 130 | Tyler, Texas 75703
940.706.4416 | Tennessee Firm License #870
© 2017 Elite Group

| | | | |
|--|------------|-----------------|------------------------|
| PREPARED FOR: © 2013 McDonald's USA, LLC | | | |
| DRAWN BY: CO | SCALE: NTS | REVIEWED BY: CO | DATE ISSUED: 4/28/2017 |
| PROJECT ADDRESS: 21320 TN-22 PARKERS CROSSROADS, TENNESSEE 38388 | | | |
| PROJECT NUMBER: 041-0760 | | | |
| PROJECT DESCRIPTION: MRP | | | |
| SHEET NO. C6.2 | | | |